



## TECH SUPPORT BULLETIN

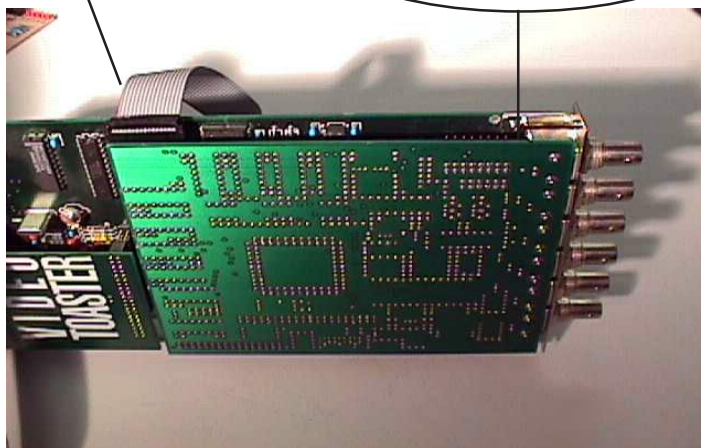
**YCP-VTT**  
**TOASTER®**  
**CALIBRATOR**

### **RIBBON CONNECTION TO VIDEO TOASTER®:**

DO NOT CONNECT TO JP-2 THE 16 PIN CONNECTOR AT THE REAR OF THE VIDEO TOASTER®. CONNECTION COULD HARM VIDEO TOASTER® OR YOUR COMPUTER. CONNECTION TO JP-2 WILL BLOW THE TRACE ON THE YCP-VTT AND VOID YOUR WARRANTY. CONNECT TO JP-6.

**CORRECT  
JP-6**

**WARNING: DO NOT  
CONNECT TO JP-2**



**THE CONNECTION IS THE SAME ON A VT-2000  
OR VT-4000 VIDEO TOASTER®**

**310 SW 6TH AVE. TOPEKA, KS 66603-3109**  
**785.235.5014 800.586.1700 FAX 785.235.3485**  
**www.ycplus.com e-mail sales@ycplus.com**