

Focus On The Field

Topeka School Installs AV Systems

by Karen Mitchell

TOPEKA, KS—It's elemental. As the city of Topeka grows and expands into its surrounding areas, schools such as Shawnee Heights High School in nearby Tecumseh trade in their rural status for growing pains including those of the AV kind.

When the school district put out the bid to redesign sound for the football field and gymnasium systems, Smith Audio Visual, Topeka, answered the design/build call, replacing the field's 40-plus-year-old system with a new system powered by TOA's HX-5 Variable Dispersion speakers.

A similar system using TOAs was also installed in the school's existing gym. The systems were installed over the summer, with the outdoor system debuting during a football game in early September. In addition to the TOA products, the project features Peavey Digitool processing and ICA-1200V power amplifiers.

"The TOAs are an excellent choice for highly reverberant spaces, such as school gymnasiums and churches," said Smith AV president, Larry Heilman. "We approached the project from an engineering standpoint to see what kind of coverage we could get using the newest technology. We found that for the football field, we could design a more compact system



Smith Audio Visual answered the design/build call from the Topeka, KS school district, replacing the football field and gymnasium's 40-plus-year-old system with a new one powered by TOA's HX-5 Variable Dispersion speakers.

installed on top of the press box instead of mounting large speakers on light poles as we might have done in the past."

In doing so, he said, these adjustable speakers could be placed nearby to increase or decrease the amount of sound. The home crowd section is located below the press box, but Smith AV had to ensure equal coverage for the visitors' section across the field as well. The old

system was a cluster of old-style horns mounted on a pole behind one end zone, resulting in poor sound in the stadium seats and almost no sound at the far end of the field.

"The football field coverage still has very even dispersion, while the design focus was for the home seating areas," Heilman added. "In the past, you had to have great big speakers that weighed 75-80 pounds (continued on page 36)"

Renkus-Heinz's ICONYX Loudspeakers

Renkus-Heinz's ICONYX (IC series) digitally controlled column loudspeakers employ line array techniques, but differ from conventional line array designs. Six models are available in 8-, 16-, 24- and 32-channel sizes to suit different



needs, such as houses of worship, transportation terminals and similar venues. All are constructed from the IC8 8-channel module. The modules are joined together in the field to form the IC16, IC16/8, IC24, IC32 and IC32/16. DSP software and true digital amplification enables the designer or operator to define the shape and aiming of the vertical beam without moving the IC columns from their installed position. Horizontal dispersion is fixed at a nominal 150 degrees between -6 dB points.

Indicate 253 on Fast Facts card or visit www.thru.to/systemscontractor.

Martin Audio's W8LMD Cabinets



Martin Audio's compact W8LMD features a 20-degree vertical dispersion to cover a wide area, and can be used individually and in limited quantities for throw applications of less than 30 meters, or as a downfill cabinet for the W8LM. Using one

or two W8LMD cabinets at the bottom of a W8LM array allows the system to throw further with the W8LMD's 120-degree dispersion covering front row central and the extreme front left and right. In arrays of one to four cabinets, the W8LMD can be used over smaller distances and coverage areas that require a large vertical angle.

Indicate 254 on Fast Facts card or visit www.thru.to/systemscontractor.

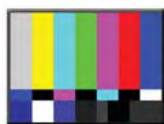
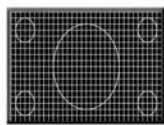
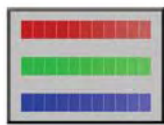
Electro-Voice's Xlc Line Array

Electro-Voice's compact line-array, Xlc, allows for easy setup and transportation without compromising sonic capacity. The XLC127+ is a 3-way design that utilizes a



12-inch vented LF, 2 x 6.5-inch MF transducers on a 120-degree horizontal waveguide, and 2 x HF transducers that combine through a vertical plan wave generator to a 120-degree waveguide. The system can be used in tri-amp mode, or bi-amp two-way using the internal passive MF to HF network. Indicate 255 on Fast Facts card or visit www.thru.to/systemscontractor.

One Size Fits All



User Friendly. All The Options.

The Sencore VP400 Series Multimedia Generator covers all your display testing needs - in ALL operating modes.



Training Available. CEDIA Credits.

The ISF/HAA Maximizing Home Theater seminar teaches complete home theater setup from calibrating video, to analyzing sound and room acoustics.

SENCORE
3200 Sencore Drive Sioux Falls, SD 57107 USA

TOPEKA

(continued from page 34)

to get the same results. Now, we don't have to contend with light poles, wind loading and pure cabinet size. The TOAs are 35 pounds apiece, extremely light. They're much more cost-effective to install; there are no 75-foot lifts required for installing

them on light poles and we didn't have to run cables out to the poles."

The Sennheiser EW122G2 wireless lavalier and EW135G2 wireless handheld microphones for the football field were selected to provide the ability for announcements to be made from the center of the field and allow the umpires to announce the penalties. A Peavey 31-band equalizer was used to flatten the au-

dio and reduce feedback.

For the gym, where sound is focused more on the crowd than on the floor, Smith AV added six TOA FB-120B subwoofers to the 12-speaker HX-5B system (not the weatherproofed version) to meet the needs of the drill team and other musical groups. The system offers a full range of sound with plenty of low end.

"The gym system also utilizes the variable dispersion feature of the HX-5 to keep the sound energy directed as desired," Heilman explained. "We used the Peavey Digi-tool as a processor; because of its 8-in and 8-out capability, it provided all of the mic mixing and digital processing plus EQ, speaker limiting and crossover needs. The gym system features an announcer headset microphone, a pair of Sennheiser wireless mics, one lav and one handheld, plus other wired mics."

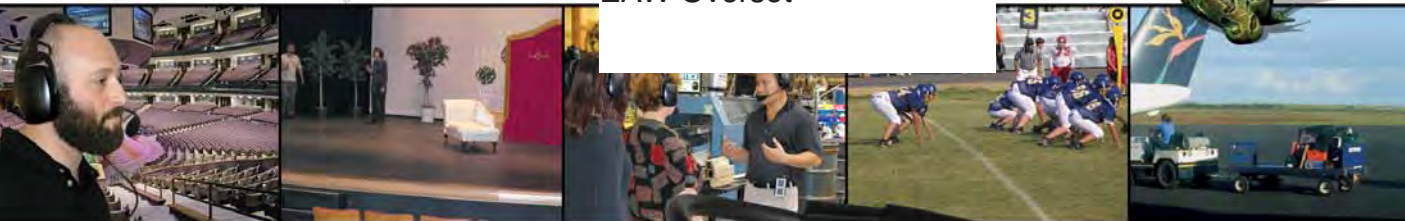
- »Peavey...www.peavey.com
- »Sennheiser...www.sennheiserusa.com
- »Smith Audio Visual...www.smithav.com
- »TOA Electronics...www.toaelectronics.com

Karen Mitchell is a freelance writer based in Boulder, CO.

Leapfrog Into the Future of Wireless Intercom Technology.
Anchor Audio Eliminates the Base Station.

PortaCom PRO™

EAW Overset



Advancing Technology . . .

No Base Station Required
User Selectable Encryption
All Call Channel
Made In The USA

Operates in 2.4 Ghz Range
Unlimited Number Of Users
15 Separate User Groups
Two Year Warranty

Great Prices For Customers / Great Margins For Resellers

toll-free 800-262-4671



www.anchoraudio.com

JBL Professional's VerTec DP Series

JBL Professional's VerTec DP series is compatible with Harman Pro Group's HiQnet System Architect software and feature JBL DrivePack technology, with remote control and monitoring capabilities. The VT4888DP line array and VT4882DP subwoofer are available with optional network input modules that allow JBL VerTec DP series systems to link into the HiQnet system. VT4888DP-AN and VT4882DP-AN feature analog audio XLR inputs. VT4888DP-CN and VT4882DP-CN feature digital audio and single cable control, and are Co-branet-compatible.

Indicate 256 on Fast Facts card or visit www.thru.to/systemscontractor.



EAW's KF730 Line Array

EAW's KF730 line array module packs a six-driver, horn-loaded design into a compact enclosure. The full-sized mid/high horn fills the entire face of the enclosure, ensuring broadband 110-degree horizontal pattern control, which is extended by the Phase Aligned LF into the LF.

A bi-amplified powering configuration (passive mid/high) reduces total system cost and complexity. The size and configuration of a KF730 series array defines its vertical coverage. Users can quickly and easily construct vertical arrays ranging from 4 to 18 enclosures.

Indicate 257 on Fast Facts card or visit www.thru.to/systemscontractor.

